

Babesiosis Surveillance in Massachusetts, 2015

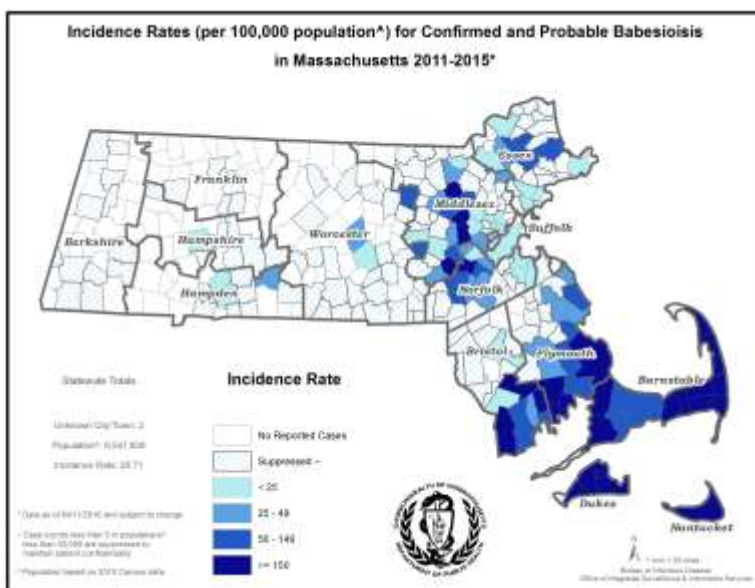
Massachusetts Department of Public Health

Investigation of suspect cases of babesiosis, and the collection of clinical and exposure data by local public health, enables MDPH to analyze trends and provide this surveillance summary.

2015 Surveillance Highlights

- ✦ 445 confirmed and probable cases of babesiosis were reported in Massachusetts in 2015, a 14% decrease from 2014. Overall, 812 suspect cases of babesiosis were investigated.
- ✦ Statewide, babesiosis incidence decreased from 7.9 to 6.8 cases per 100,000 residents. However, the incidence in Essex, Franklin, Hampshire, Norfolk and Worcester counties increased slightly. Counties with the highest incidence continued to be Barnstable, Dukes, and Nantucket.
- ✦ The majority of cases occurred in June, July and August, with only 24% of cases reporting awareness of a recent tick bite.
- ✦ People aged 60 years and older continue to be at greatest risk for clinical disease (58% of all patients identified with babesiosis were 60 years or older) and 69% of all cases were male.
- ✦ Approximately one out of three (35%) cases was hospitalized. The symptoms most commonly reported included fatigue (72%), fever (68%), malaise (58%), muscle aches and pain (50%) and chills (49%). There were at least 4 fatalities.
- ✦ 12 confirmed cases (3%) had received a blood transfusion in the six months prior to becoming ill and seven of those are confirmed or likely transfusion-transmitted cases.
- ✦ For more information about babesiosis and other tick-borne diseases, including things you can do to keep you and your loved ones safe, please visit www.mass.gov/dph/tick.

The map below illustrates babesiosis incidence rates per 100,000 population by city and town of residence in Massachusetts for 2011-2015. Areas of highest incidence include southern and central Middlesex County, parts of Essex County, Cape Cod, Southeastern Massachusetts and the islands of Nantucket and Martha's Vineyard.



County	2015 Cases Confirmed and Probable	2015 Incidence Rate (per 100,000)
Barnstable	72	33.4
Berkshire	9	6.9
Bristol	69	12.6
Dukes	18	108.9
Essex	36	4.8
Franklin	2	2.8
Hampden	5	1.1
Hampshire	5	3.2
Middlesex	65	4.3
Nantucket	22	216.3
Norfolk	42	6.3
Plymouth	73	14.7
Suffolk	9	1.2
Worcester	18	2.3
State Total	445	6.8

Data as of April 4, 2016 and are subject to change.

Figure 1.

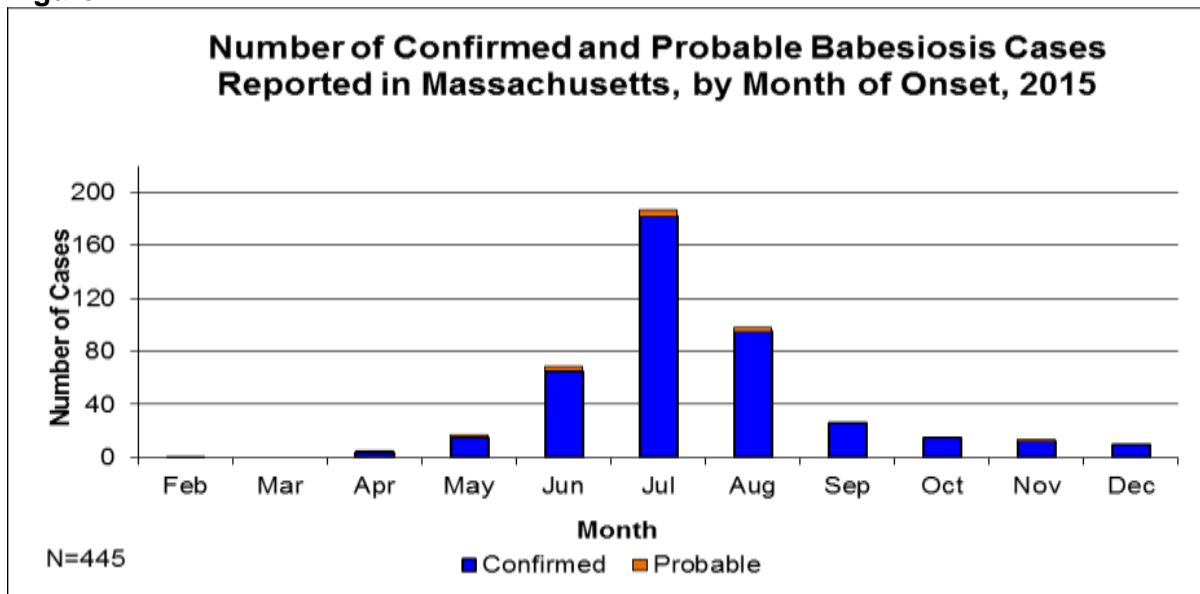


Figure 2.

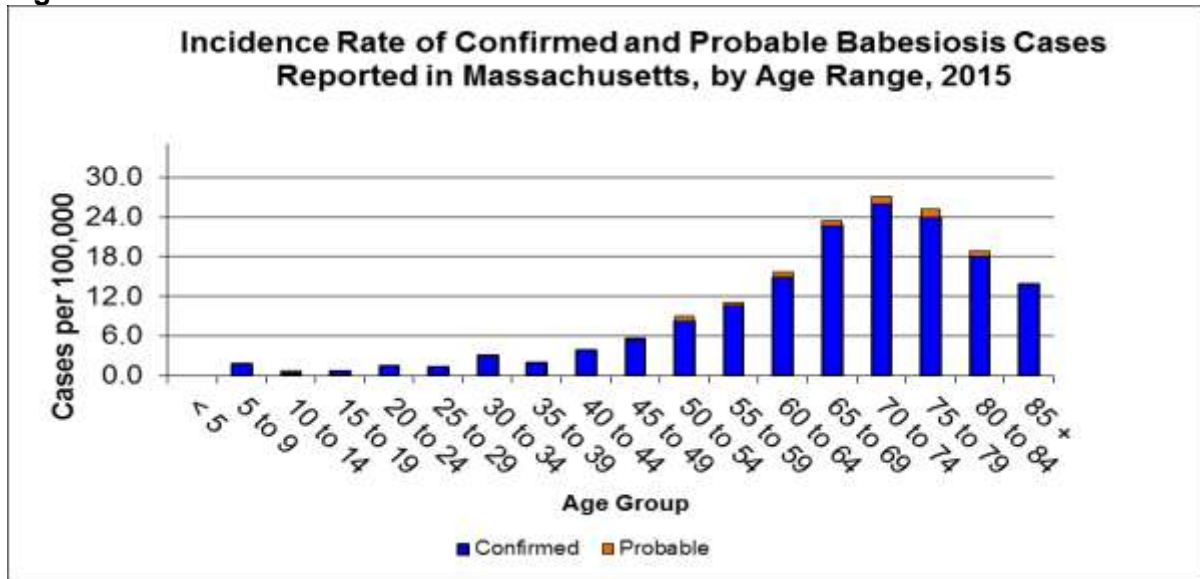
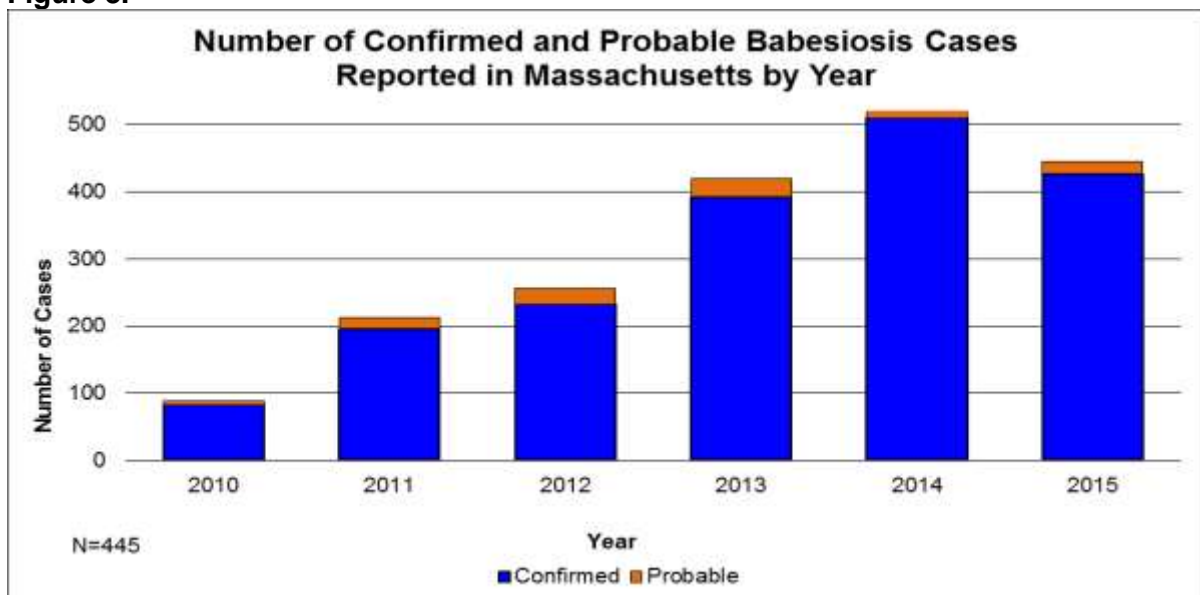


Figure 3.



Data as of April 4, 2016 and are subject to change.